

**CRK Antibody**  
**Purified Mouse Monoclonal Antibody**  
**Catalog # AO1607a****Specification****CRK Antibody - Product Information**

Application	WB, IHC, FC, ICC, E
Primary Accession	<a href="#">P46108</a>
Reactivity	Human
Host	Mouse
Clonality	Monoclonal
Isotype	IgG2b
Calculated MW	42kDa KDa

**Description**

This gene encodes a member of an adapter protein family that binds to several tyrosine-phosphorylated proteins. The product of this gene has several SH2 and SH3 domains (src-homology domains) and is involved in several signaling pathways, recruiting cytoplasmic proteins in the vicinity of tyrosine kinase through SH2-phosphotyrosine interaction. The N-terminal SH2 domain of this protein functions as a positive regulator of transformation whereas the C-terminal SH3 domain functions as a negative regulator of transformation. Two alternative transcripts encoding different isoforms with distinct biological activity have been described.

**Immunogen**

Purified recombinant fragment of human CRK expressed in E. Coli. <br />

**Formulation**

Ascitic fluid containing 0.03% sodium azide.

**CRK Antibody - Additional Information**

**Gene ID** 1398

**Other Names**

Adapter molecule crk, Proto-oncogene c-Crk, p38, CRK

**Dilution**

WB~~1/500 - 1/2000

IHC~~1/200 - 1/1000

FC~~1/200 - 1/400

ICC~~N/A

E~~1/10000

**Storage**

Maintain refrigerated at 2-8°C for up to 6 months. For long term storage store at -20°C in small aliquots to prevent freeze-thaw cycles.

**Precautions**

CRK Antibody is for research use only and not for use in diagnostic or therapeutic procedures.

## CRK Antibody - Protein Information

**Name** CRK

### Function

Involved in cell branching and adhesion mediated by BCAR1- CRK-RAPGEF1 signaling and activation of RAP1.

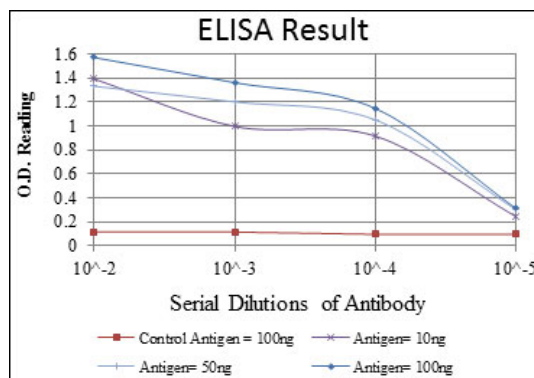
### Cellular Location

Cytoplasm. Cell membrane. Note=Translocated to the plasma membrane upon cell adhesion.

## CRK Antibody - Protocols

Provided below are standard protocols that you may find useful for product applications.

- [Western Blot](#)
- [Blocking Peptides](#)
- [Dot Blot](#)
- [Immunohistochemistry](#)
- [Immunofluorescence](#)
- [Immunoprecipitation](#)
- [Flow Cytometry](#)
- [Cell Culture](#)



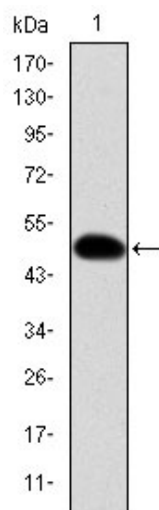


Figure 1: Western blot analysis using CRK mAb against human CRK (AA: 1-204) recombinant protein. (Expected MW is 48.4 kDa)

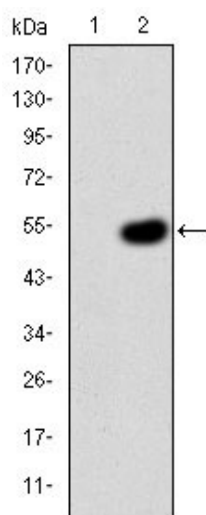


Figure 2: Western blot analysis using CRK mAb against HEK293 (1) and CRK(AA: 1-204)-hIgGFc transfected HEK293 (2) cell lysate.

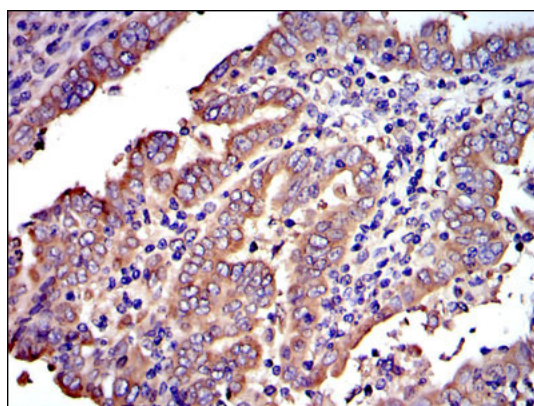


Figure 3: Immunohistochemical analysis of paraffin-embedded intima cancer tissues using CRK mouse mAb with DAB staining.

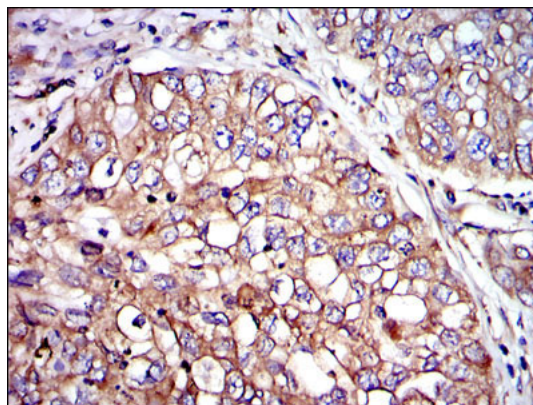


Figure 4: Immunohistochemical analysis of paraffin-embedded lung cancer tissues using CRK mouse mAb with DAB staining.

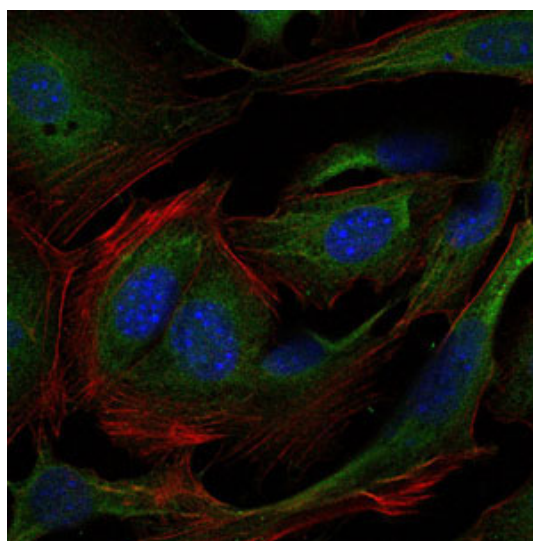


Figure 5: Immunofluorescence analysis of 3T3-L1 cells using CRK mouse mAb (green). Blue: DRAQ5 fluorescent DNA dye. Red: Actin filaments have been labeled with Alexa Fluor-555 phalloidin.

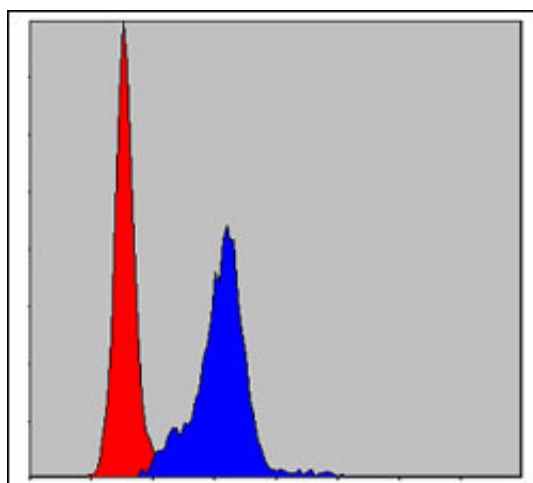


Figure 6: Flow cytometric analysis of Hela cells using CRK mouse mAb (blue) and negative control (red).

## CRK Antibody - References

1. Seikagaku. 2009 May;81(5):361-76. 2. Mol Cancer Res. 2009 Sep;7(9):1582-92.